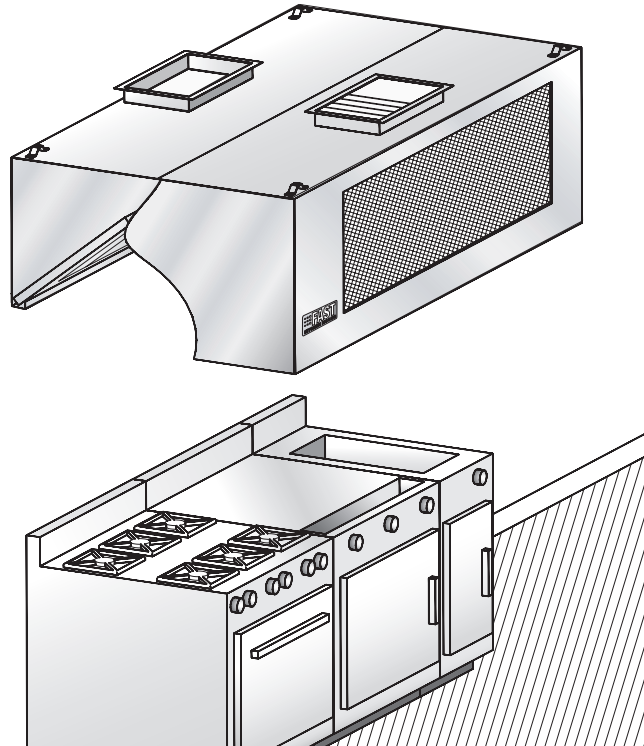



Model **SSH-MUA-F****C****Filter hood with frontal make-up air****Description:**

FAST wall-type exhaust hood model SSH-MUA-F complete with baffle filters. Ideal for kitchens with limited ceiling space and avoid extensive duct work to multiple ceiling diffusers

Specifications:

- Constructed of sturdy 18-gauge (1.2 mm) stainless steel
- Available in lengths of 3' 0" to 16' 0" (914 mm to 4,877 mm)
- Washable baffle filters
- Replacement tempered air distributed at front of hood
- Improves productivity by ensuring efficiency, performance and comfort for the kitchen staff
- Easy installation
- Listed NSF, ETL and 
- Many options available (see reverse)
- Quick delivery

Enclosure panels (optional):

The space between the top of the hood and the ceiling may be closed with stainless steel panels in the same finish as the hood.

Construction:

Exposed hood surface: type 430 stainless steel (304 optional) with #4 finish (brushed). Non-exposed hood surface: stainless steel with #2B finish. Minimum 18-gauge (1.2 mm) thickness. All visible welded joints are polished to match original finish. To meet NFPA- 96 requirements.

Installation:Suspension (recommended height)

The hood should be installed 6' 6" (1,981 mm) from the floor. Hanging brackets are welded at all four corners.

Semi-combustible materials

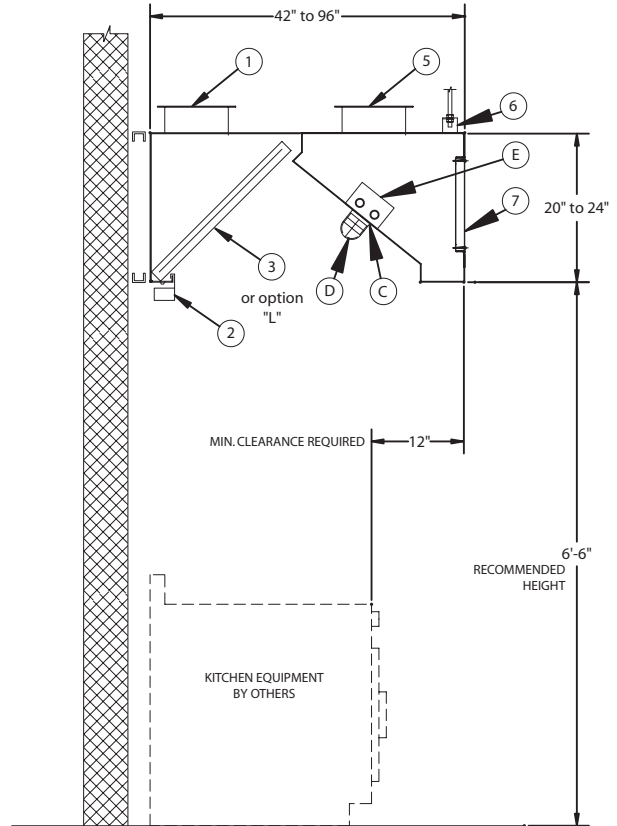
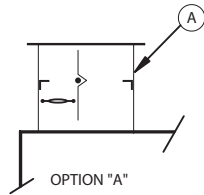
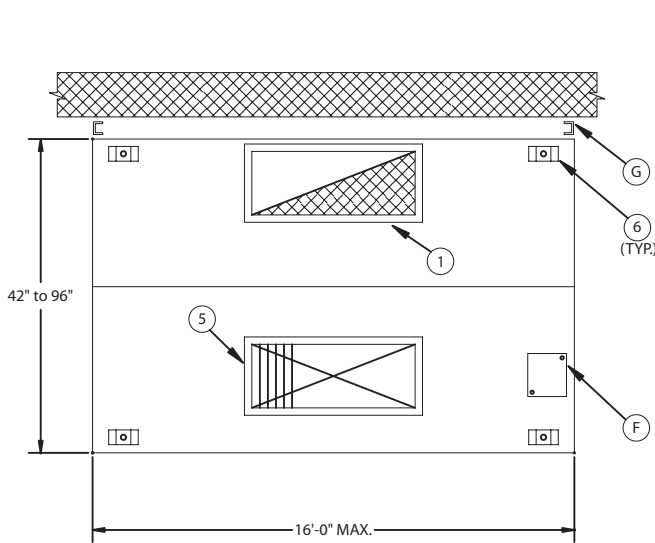
A clearance of 3" (76 mm) is required when the hood is in contact with semi-combustible materials. As per NFPA-96 standards, a stainless steel spacer will be required.

Electrical:

Junction box and pre-wiring for lighting system may be factory installed if required.

C

Filter hood with frontal make-up air



Optional accessories: (see section "K" for details)

A	listed exhaust collar with fire damper
B	listed exhaust collar with balancing damper
D	Wire guard for incandescent lights
E	36" or 48" fluorescent lights (Quantity recommended: (1) light per 8 linear feet of hood)
F	Junction box and pre-wiring for lighting
H	Enclosure panels, stainless steel with #4 finish, between hood and ceiling
I	PAC-02 programmable control panel
J	End skirts should be used to maximize hood performance
L	listed stainless steel baffle filters
O	ETL-listed end of day damper

Accessories included:

1	Exhaust collar (3" high)
2	Grease receptacle
3	listed galvanized steel baffle filters
5	Supply collar with listed fire damper
6	Hanging brackets
7	Stainless steel supply grid
C	Incandescent lights (Quantity recommended: (1) light per 5 linear feet of hood)
G	3" rear-spacer for clearance to meet NFPA- 96 requirements

C Filter hood with frontal make-up air

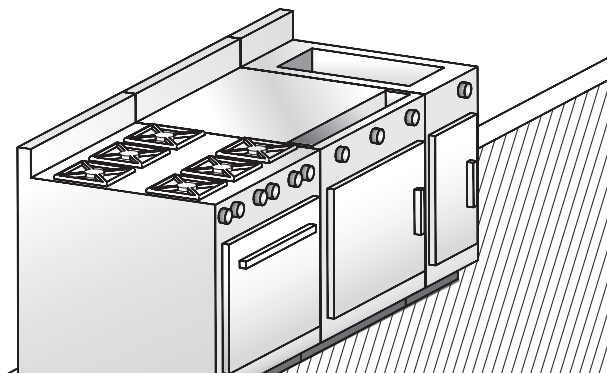
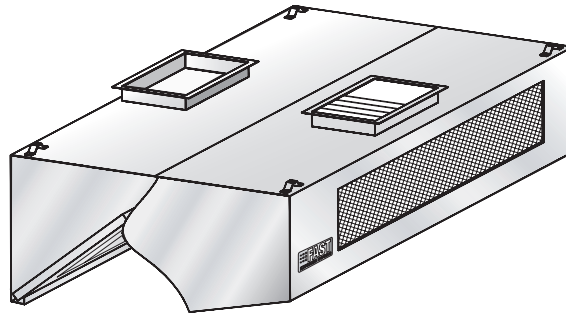
Length		260 CFM (125 L / S) / Linear Ft. *				Supply		Collar/Opening 12" (305 mm) x _____	
Feet	mm	CFM	L/S	Inches	mm	CFM	L/S	Inches	mm
3'-6"	1068	910	430	10	254	700	330	12	305
4'-0"	1220	1040	490	12	305	800	380	12	305
4'-6"	1372	1170	550	12	305	900	425	14	356
5'-0"	1524	1300	615	14	355	950	450	14	356
5'-6"	1676	1430	675	16	405	1050	500	16	406
6'-0"	1828	1560	735	16	405	1150	545	16	406
6'-6"	1981	1690	800	18	457	1200	570	18	457
7'-0"	2134	1820	860	20	508	1400	660	20	508
7'-6"	2286	1950	920	22	558	1500	710	22	559
8'-0"	2438	2080	980	24	610	1600	755	22	559
8'-6"	2590	2210	1045	24	610	1700	800	24	610
9'-0"	2743	2340	1105	26	660	1800	850	24	610
9'-6"	2895	2470	1165	28	711	1950	920	26	660
10'-0"	3048	2600	1230	28	711	2000	945	28	711
10'-6"	3200	2730	1290	30	762	2150	1015	(2) 16	(2) 406
11'-0"	3352	2860	1350	32	812	2300	1085	(2) 16	(2) 406
11'-6"	3505	2960	1410	(2) 16	(2) 405	2400	1130	(2) 18	(2) 457
12'-0"	3657	3120	1470	(2) 18	(2) 457	2500	1180	(2) 18	(2) 457
12'-6"	3810	3250	1535	(2) 18	(2) 457	2600	1225	(2) 18	(2) 457
13'-0"	3962	3380	1595	(2) 18	(2) 457	2700	1275	(2) 20	(2) 508
13'-6"	4115	3510	1635	(2) 20	(2) 508	2800	1320	(2) 20	(2) 508
14'-0"	4267	3640	1720	(2) 20	(2) 508	2950	1390	(2) 20	(2) 508
14'-6"	4420	3770	1780	(2) 20	(2) 508	3050	1440	(2) 22	(2) 559
15'-0"	4572	3900	1840	(2) 22	(2) 558	3150	1485	(2) 22	(2) 559
15'-6"	4724	4030	1900	(2) 22	(2) 558	3260	1540	(2) 24	(2) 610
16'-0"	4877	4160	1965	(2) 24	(2) 610	3360	1585	(2) 24	(2) 610

* Exhaust for 42" (1,065 mm) and 48" (1,220 mm)-deep hoods.




	Exhaust VOLUME (CFM / Lin. Ft.)	Internal pressure loss (IN / H ₂ O)	Exhaust VOLUME (L/S per linear metre)	Internal pressure loss (Pa)
Light cooking	175	0,30	270	75
Medium cooking	260	0,40	400	100
Heavy cooking	350	0,60	540	150



Model **LP-SSH-MUA-F****Filter hood with frontal make-up air****Description:**

FAST wall-type exhaust hood model LP-SSH-MUA-F complete with baffle filters. **Ideal for low-ceiling kitchens with limited ceiling space and avoid extensive duct work to multiple ceiling diffusers.**

Specifications:

- Constructed of sturdy 18-gauge (1.2 mm) stainless steel
- Available in lengths of 3' 0" to 16' 0" (914 mm to 4,877 mm)
- Specially designed for low-ceiling kitchens
- Washable baffle filters
- Replacement tempered air distributed at front of hood
- Improves productivity by ensuring efficiency, performance and comfort for the kitchen staff
- Easy installation
- Listed NSF, ETL and 
- Many options available (see reverse)
- Quick delivery

Enclosure panels (optional):

The space between the top of the hood and the ceiling may be closed with stainless steel panels in the same finish as the hood.

Construction:

Exposed hood surface: type 430 stainless steel (304 optional) with #4 finish (brushed). Non-exposed hood surface: stainless steel with #2B finish. Minimum 18-gauge (1.2 mm) thickness. All visible welded joints are polished to match original finish. To meet NFPA- 96 requirements.

Installation:Suspension (recommended height)

The hood should be installed 6' 6" (1,981 mm) from the floor. Hanging brackets are welded at all four corners.

Semi-combustible materials

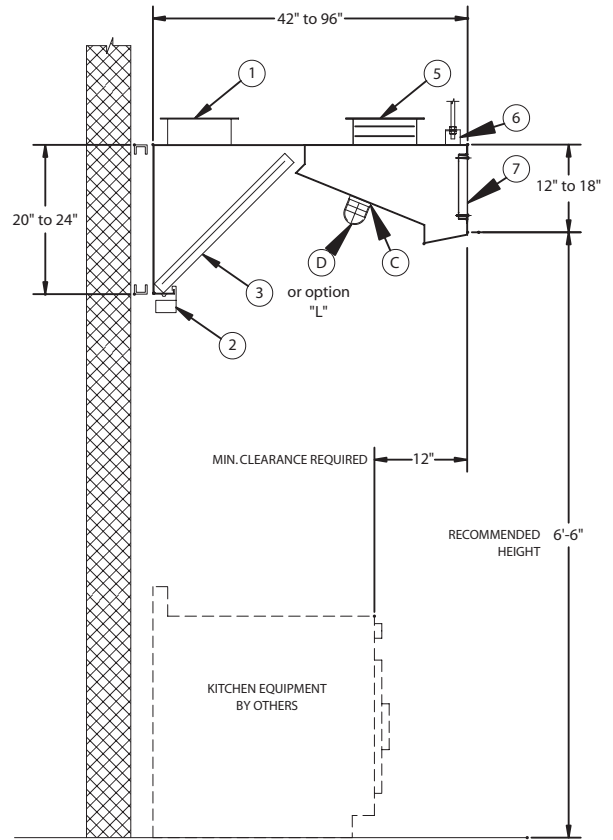
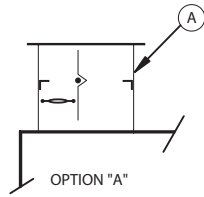
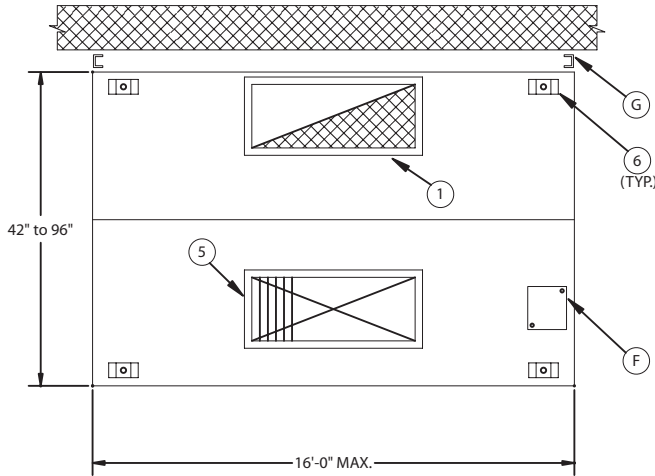
A clearance of 3" (76 mm) is required when the hood is in contact with semi-combustible materials. As per NFPA-96 standards, a stainless steel spacer will be required.

Electrical:

Junction box and pre-wiring for lighting system may be factory installed if required.

C

Filter hood with frontal make-up air



Optional accessories: (see section "K" for details)

A	listed exhaust collar with fire damper
B	listed exhaust collar with balancing damper
D	Wire guard for incandescent lights
F	Junction box and pre-wiring for lighting
H	Enclosure panels, stainless steel with #4 finish, between hood and ceiling
I	PAC-02 programmable control panel
J	End skirts should be used to maximize hood performance
L	listed stainless steel baffle filters
O	ETL-listed end of day damper

Accessories included:

1	Exhaust collar (3" high)
2	Grease receptacle
3	listed galvanized steel baffle filters
5	Supply collar with listed fire damper
6	Hanging brackets
7	Stainless steel supply grid
C	Incandescent lights (Quantity recommended: (1) light per 5 linear feet of hood)
G	3" rear-spacer for clearance to meet NFPA- 96 requirements

C Filter hood with frontal make-up air

Length		260 CFM (125 L / S) / Linear Ft. *				Supply		Collar/Opening 12" (305 mm) x _____	
Feet	mm	CFM	L/S	Inches	mm	CFM	L/S	Inches	mm
3'-6"	1068	910	430	10	254	700	330	12	305
4'-0"	1220	1040	490	12	305	800	380	12	305
4'-6"	1372	1170	550	12	305	900	425	14	356
5'-0"	1524	1300	615	14	355	950	450	14	356
5'-6"	1676	1430	675	16	405	1050	500	16	406
6'-0"	1828	1560	735	16	405	1150	545	16	406
6'-6"	1981	1690	800	18	457	1200	570	18	457
7'-0"	2134	1820	860	20	508	1400	660	20	508
7'-6"	2286	1950	920	22	558	1500	710	22	559
8'-0"	2438	2080	980	24	610	1600	755	22	559
8'-6"	2590	2210	1045	24	610	1700	800	24	610
9'-0"	2743	2340	1105	26	660	1800	850	24	610
9'-6"	2895	2470	1165	28	711	1950	920	26	660
10'-0"	3048	2600	1230	28	711	2000	945	28	711
10'-6"	3200	2730	1290	30	762	2150	1015	(2) 16	(2) 406
11'-0"	3352	2860	1350	32	812	2300	1085	(2) 16	(2) 406
11'-6"	3505	2960	1410	(2) 16	(2) 405	2400	1130	(2) 18	(2) 457
12'-0"	3657	3120	1470	(2) 18	(2) 457	2500	1180	(2) 18	(2) 457
12'-6"	3810	3250	1535	(2) 18	(2) 457	2600	1225	(2) 18	(2) 457
13'-0"	3962	3380	1595	(2) 18	(2) 457	2700	1275	(2) 20	(2) 508
13'-6"	4115	3510	1635	(2) 20	(2) 508	2800	1320	(2) 20	(2) 508
14'-0"	4267	3640	1720	(2) 20	(2) 508	2950	1390	(2) 20	(2) 508
14'-6"	4420	3770	1780	(2) 20	(2) 508	3050	1440	(2) 22	(2) 559
15'-0"	4572	3900	1840	(2) 22	(2) 558	3150	1485	(2) 22	(2) 559
15'-6"	4724	4030	1900	(2) 22	(2) 558	3260	1540	(2) 24	(2) 610
16'-0"	4877	4160	1965	(2) 24	(2) 610	3360	1585	(2) 24	(2) 610

* Exhaust for 42" (1,065 mm) and 48" (1,220 mm)-deep hoods.



	Exhaust VOLUME (CFM / Lin. Ft.)	Internal pressure loss (IN / H ₂ O)	Exhaust VOLUME (L/S per linear metre)	Internal pressure loss (Pa)
Light cooking	175	0,30	270	75
Medium cooking	260	0,40	400	100
Heavy cooking	350	0,60	540	150



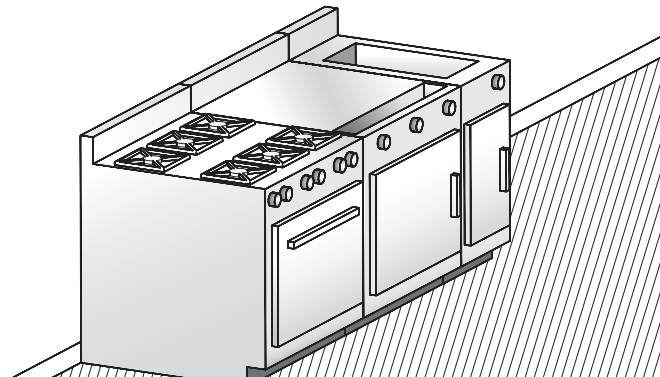
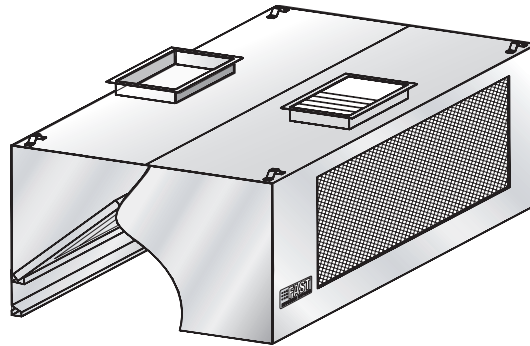


When Time **Matters!**

Model **PS-SSH-MUA-F**




Filter hood with frontal make-up air



Description:

FAST wall-type exhaust hood model PS-SSH-MUA-F complete with baffle filters. Ideal for kitchens with limited ceiling space and avoid extensive duct work to multiple ceiling diffusers. For heavy cooking applications (woks, charbroilers, live charcoal, etc.).

Specifications:

- Constructed of sturdy 18-gauge (1.2 mm) stainless steel
- Available in lengths of 3' 0" to 16' 0" (914 mm to 4,877 mm)
- Washable baffle filters
- Replacement tempered air distributed at front of hood
- Improves productivity by ensuring efficiency, performance and comfort for the kitchen staff
- Easy installation
- Listed NSF, ETL and 
- Many options available (see reverse)
- Quick delivery

Enclosure panels (optional):

The space between the top of the hood and the ceiling may be closed with stainless steel panels in the same finish as the hood.

Construction:

Exposed hood surface: type 430 stainless steel (304 optional) with #4 finish (brushed). Non-exposed hood surface: stainless steel with #2B finish. Minimum 18-gauge (1.2 mm) thickness. All visible welded joints are polished to match original finish. To meet NFPA- 96 requirements.

Installation:

Suspension (recommended height)

The hood should be installed 6' 6" (1,981 mm) from the floor. Hanging brackets are welded at all four corners.

Semi-combustible materials

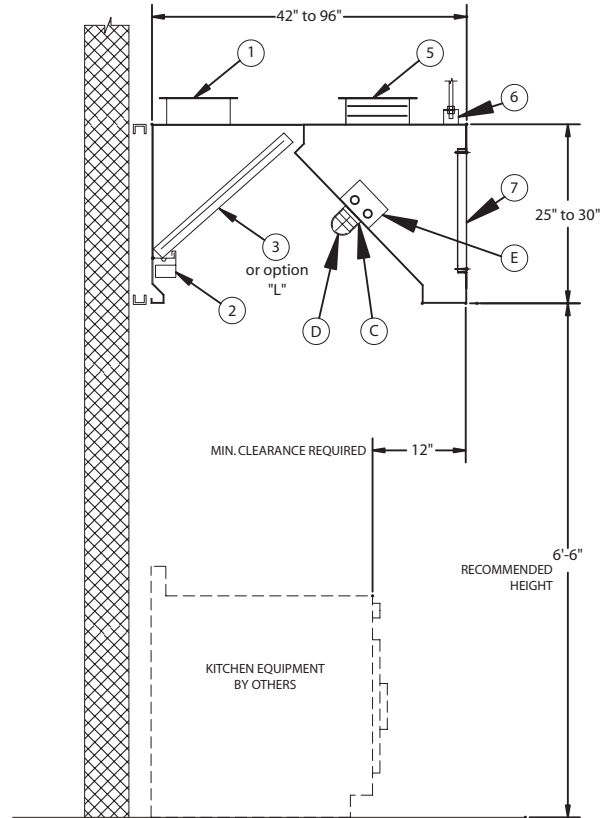
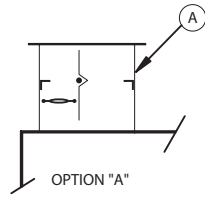
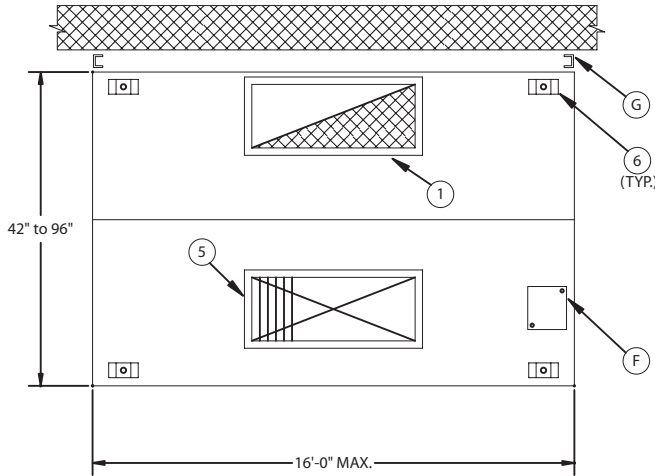
A clearance of 3" (76 mm) is required when the hood is in contact with semi-combustible materials. As per NFPA-96 standards, a stainless steel spacer will be required.

Electrical:

Junction box and pre-wiring for lighting system may be factory installed if required.

C

Filter hood with frontal make-up air



Optional accessories: (see section "K" for details)

A	UL listed exhaust collar with fire damper
B	UL listed exhaust collar with balancing damper
D	Wire guard for incandescent lights
E	36" or 48" fluorescent lights (Quantity recommended: (1) light per 8 linear feet of hood)
F	Junction box and pre-wiring for lighting
H	Enclosure panels, stainless steel with #4 finish, between hood and ceiling
I	PAC-02 programmable control panel
J	End skirts should be used to maximize hood performance
L	UL listed stainless steel baffle filters
O	ETL-listed end of day damper

Accessories included:

1	Exhaust collar (3" high)
2	Grease receptacle
3	UL listed galvanized steel baffle filters
5	Supply collar with UL listed fire damper
6	Hanging brackets
7	Stainless steel supply grid
C	Incandescent lights (Quantity recommended: (1) light per 5 linear feet of hood)
G	3" rear-spacer for clearance to meet NFPA- 96 requirements

C Filter hood with frontal make-up air

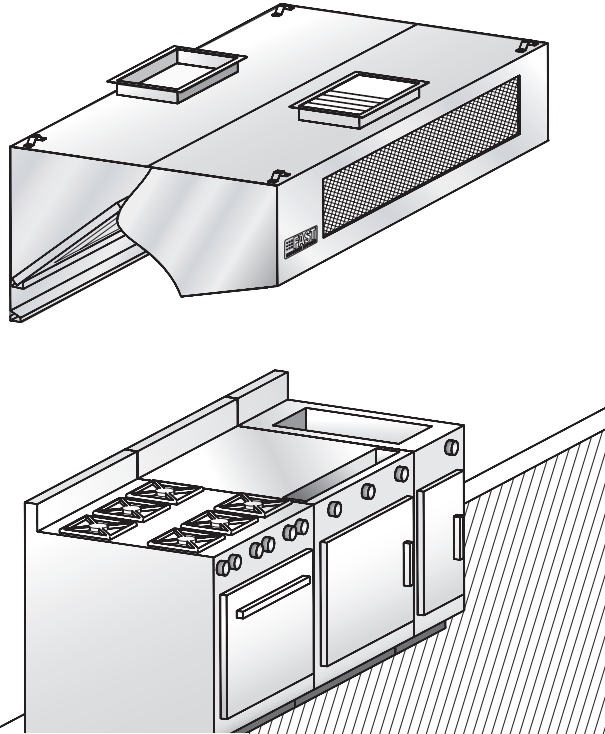
Length		350 CFM (165 L / S) / Linear Ft. *				Supply		Collar/Opening 12" (305 mm) x _____	
Feet	mm	CFM	L/S	Inches	mm	CFM	L/S	Inches	mm
3'-6"	1068	1225	580	12	305	900	425	12	305
4'-0"	1220	1400	660	12	305	1000	472	14	355
4'-6"	1372	1575	745	14	355	1200	567	16	405
5'-0"	1524	1750	825	16	405	1300	614	18	457
5'-6"	1676	1925	910	18	455	1400	660	18	457
6'-0"	1828	2100	990	18	455	1500	708	20	508
6'-6"	1981	2275	1075	20	510	1750	826	22	558
7'-0"	2134	2450	1155	22	560	1900	897	24	610
7'-6"	2286	2625	1240	24	610	2100	990	26	660
8'-0"	2438	2800	1320	26	660	2240	1057	28	711
8'-6"	2590	2975	1400	26	660	2380	1123	30	762
9'-0"	2743	3150	1485	28	710	2500	1180	32	812
9'-6"	2893	3325	1570	30	760	2650	1250	34	867
10'-0"	3048	3500	1650	32	810	2800	1322	(2) 18	(2) 457
10'-6"	3200	3675	1735	34	867	2950	1392	(2) 20	(2) 508
11'-0"	3352	3850	1815	(2) 18	(2) 455	3100	1463	(2) 22	(2) 558
11'-6"	3505	4025	1900	(2) 18	(2) 455	3250	1534	(2) 22	(2) 558
12'-0"	3657	4200	1980	(2) 18	(2) 455	3400	1605	(2) 24	(2) 610
12'-6"	3810	4375	2065	(2) 20	(2) 510	3550	1675	(2) 24	(2) 610
13'-0"	3962	4550	2145	(2) 20	(2) 510	3700	1746	(2) 26	(2) 660
13'-6"	4115	4725	2230	(2) 22	(2) 560	3900	1840	(2) 26	(2) 660
14'-0"	4267	4900	2310	(2) 22	(2) 560	4000	1888	(2) 28	(2) 711
14'-6"	4420	5075	2395	(2) 22	(2) 560	4200	1982	(2) 28	(2) 711
15'-0"	4572	5250	2475	(2) 24	(2) 610	4350	2052	(2) 30	(2) 762
15'-6"	4724	5425	2560	(2) 24	(2) 610	4525	2136	(2) 32	(2) 812
16'-0"	4877	5600	2640	(2) 26	(2) 660	4700	2220	(2) 34	(2) 867

* Exhaust for 42" (1,065 mm) and 48" (1,220 mm)-deep hoods.




	Exhaust VOLUME (CFM / Lin. Ft.)	Internal pressure loss (IN / H ₂ O)	Exhaust VOLUME (L/S per linear metre)	Internal pressure loss (Pa)
Light cooking	175	0,30	270	75
Medium cooking	260	0,40	400	100
Heavy cooking	350	0,60	540	150



Model **PS-LP-SSH-MUA-F****C****Filter hood with frontal make-up air****Description:**

FAST wall-type exhaust hood model PS-LP-SSH-MUA-F complete with baffle filters. Ideal for kitchens with limited ceiling space and avoid extensive duct work to multiple ceiling diffusers. For low-ceiling kitchens. For heavy cooking applications (woks, charbroilers, live charcoal, etc.).

Specifications:

- Constructed of sturdy 18-gauge (1.2 mm) stainless steel
- Available in lengths of 3' 0" to 16' 0" (914 mm to 4,877 mm)
- Specially designed for low-ceiling kitchens
- Washable baffle filters
- Replacement tempered air distributed at front of hood
- Improves productivity by ensuring efficiency, performance and comfort for the kitchen staff
- Easy installation
- Listed NSF, ETL and 
- Many options available (see reverse)
- Quick delivery

Enclosure panels (optional):

The space between the top of the hood and the ceiling may be closed with stainless steel panels in the same finish as the hood.

Construction:

Exposed hood surface: type 430 stainless steel (304 optional) with #4 finish (brushed). Non-exposed hood surface: stainless steel with #2B finish. Minimum 18-gauge (1.2 mm) thickness. All visible welded joints are polished to match original finish. To meet NFPA- 96 requirements.

Installation:Suspension (recommended height)

The hood should be installed 6' 6" (1,981 mm) from the floor. Hanging brackets are welded at all four corners.

Semi-combustible materials

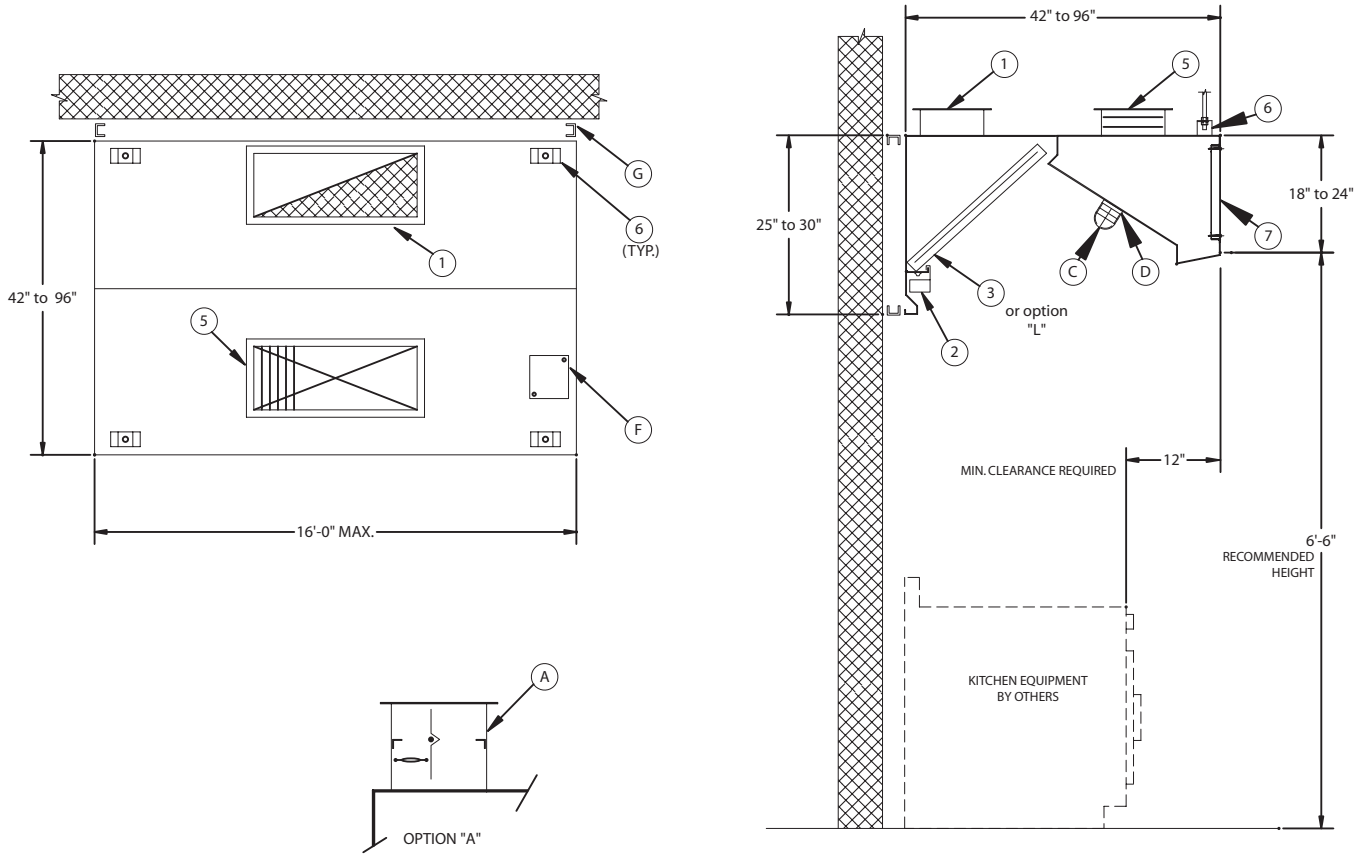
A clearance of 3" (76 mm) is required when the hood is in contact with semi-combustible materials. As per NFPA-96 standards, a stainless steel spacer will be required.

Electrical:

Junction box and pre-wiring for lighting system may be factory installed if required.

C

Filter hood with frontal make-up air



Optional accessories: (see section "K" for details)

A	UL listed exhaust collar with fire damper
B	UL listed exhaust collar with balancing damper
D	Wire guard for incandescent lights
F	Junction box and pre-wiring for lighting
H	Enclosure panels, stainless steel with #4 finish, between hood and ceiling
I	PAC-02 programmable control panel
J	End skirts should be used to maximize hood performance
L	UL listed stainless steel baffle filters
O	ETL-listed end of day damper

Accessories included:

1	Exhaust collar (3" high)
2	Grease receptacle
3	UL listed galvanized steel baffle filters
5	Supply collar with UL listed fire damper
6	Hanging brackets
7	Stainless steel supply grid
C	Incandescent lights (Quantity recommended: (1) light per 5 linear feet of hood)
G	3" rear-spacer for clearance to meet NFPA- 96 requirements

C Filter hood with frontal make-up air

Length		350 CFM (165 L / S) / Linear Ft. *				Supply		Collar/Opening 12" (305 mm) x _____	
Feet	mm	CFM	L/S	Inches	mm	CFM	L/S	Inches	mm
3'-6"	1068	1225	580	12	305	900	425	12	305
4'-0"	1220	1400	660	12	305	1000	472	14	355
4'-6"	1372	1575	745	14	355	1200	567	16	405
5'-0"	1524	1750	825	16	405	1300	614	18	457
5'-6"	1676	1925	910	18	455	1400	660	18	457
6'-0"	1828	2100	990	18	455	1500	708	20	508
6'-6"	1981	2275	1075	20	510	1750	826	22	558
7'-0"	2134	2450	1155	22	560	1900	897	24	610
7'-6"	2286	2625	1240	24	610	2100	990	26	660
8'-0"	2438	2800	1320	26	660	2240	1057	28	711
8'-6"	2590	2975	1400	26	660	2380	1123	30	762
9'-0"	2743	3150	1485	28	710	2500	1180	32	812
9'-6"	2893	3325	1570	30	760	2650	1250	34	867
10'-0"	3048	3500	1650	32	810	2800	1322	(2) 18	(2) 457
10'-6"	3200	3675	1735	34	867	2950	1392	(2) 20	(2) 508
11'-0"	3352	3850	1815	(2) 18	(2) 455	3100	1463	(2) 22	(2) 558
11'-6"	3505	4025	1900	(2) 18	(2) 455	3250	1534	(2) 22	(2) 558
12'-0"	3657	4200	1980	(2) 18	(2) 455	3400	1605	(2) 24	(2) 610
12'-6"	3810	4375	2065	(2) 20	(2) 510	3550	1675	(2) 24	(2) 610
13'-0"	3962	4550	2145	(2) 20	(2) 510	3700	1746	(2) 26	(2) 660
13'-6"	4115	4725	2230	(2) 22	(2) 560	3900	1840	(2) 26	(2) 660
14'-0"	4267	4900	2310	(2) 22	(2) 560	4000	1888	(2) 28	(2) 711
14'-6"	4420	5075	2395	(2) 22	(2) 560	4200	1982	(2) 28	(2) 711
15'-0"	4572	5250	2475	(2) 24	(2) 610	4350	2052	(2) 30	(2) 762
15'-6"	4724	5425	2560	(2) 24	(2) 610	4525	2136	(2) 32	(2) 812
16'-0"	4877	5600	2640	(2) 26	(2) 660	4700	2220	(2) 34	(2) 867

* Exhaust for 42" (1,065 mm) and 48" (1,220 mm)-deep hoods.



	Exhaust VOLUME (CFM / Lin. Ft.)	Internal pressure loss (IN / H ₂ O)	Exhaust VOLUME (L/S per linear metre)	Internal pressure loss (Pa)
Light cooking	175	0,30	270	75
Medium cooking	260	0,40	400	100
Heavy cooking	350	0,60	540	150



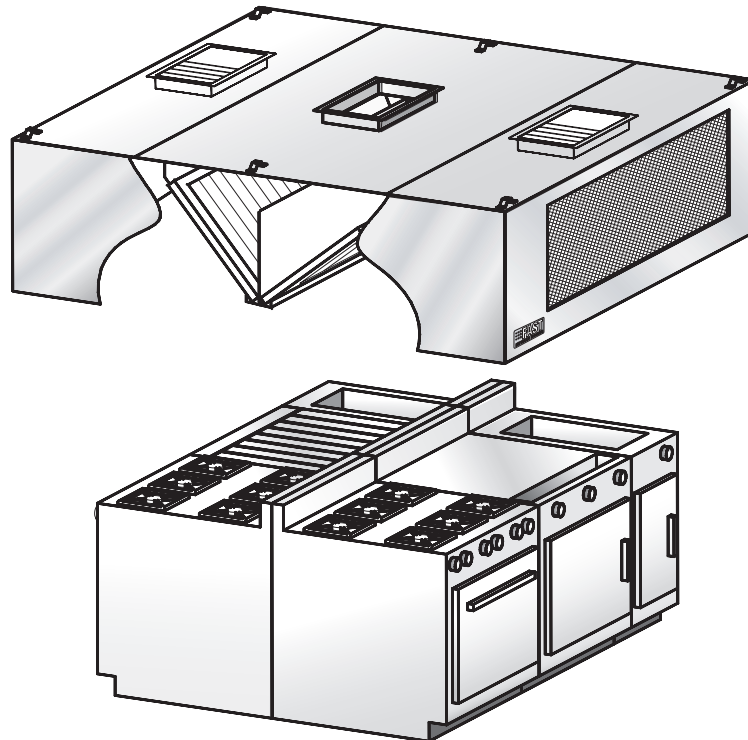


When Time **Matters!**

Model **SSH-C-MUA-F**

C


Filter hood with frontal make-up air



Description:

FAST central island exhaust hood model SSH-C-MUA-F complete with baffle filters. Ideal for kitchens with limited ceiling space and avoid extensive duct work to multiple ceiling diffusers.

Specifications:

- Constructed of sturdy 18-gauge (1.2 mm) stainless steel
- Available in lengths of 3' 0" to 16' 0" (914 mm to 4,877 mm)
- Washable baffle filters
- Replacement tempered air distributed at front of hood
- Improves productivity by ensuring efficiency, performance and comfort for the kitchen staff
- Easy installation
- Listed NSF, ETL and 
- Many options available (see reverse)
- Quick delivery

Enclosure panels (optional):

The space between the top of the hood and the ceiling may be closed with stainless steel panels in the same finish as the hood.

Construction:

Exposed hood surface: type 430 stainless steel (304 optional) with #4 finish (brushed). Non-exposed hood surface: stainless steel with #2B finish. Minimum 18-gauge (1.2 mm) thickness. All visible welded joints are polished to match original finish. To meet NFPA- 96 requirements.

Installation:

Suspension (recommended height)

The hood should be installed 6' 6" (1,981 mm) from the floor. Hanging brackets are welded at all four corners.

Semi-combustible materials

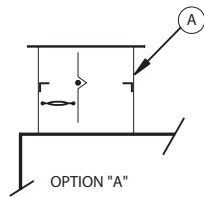
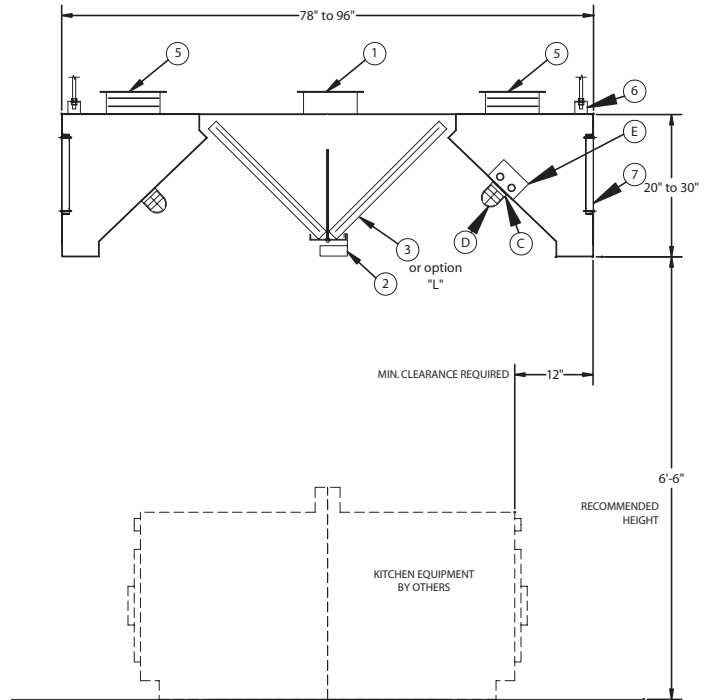
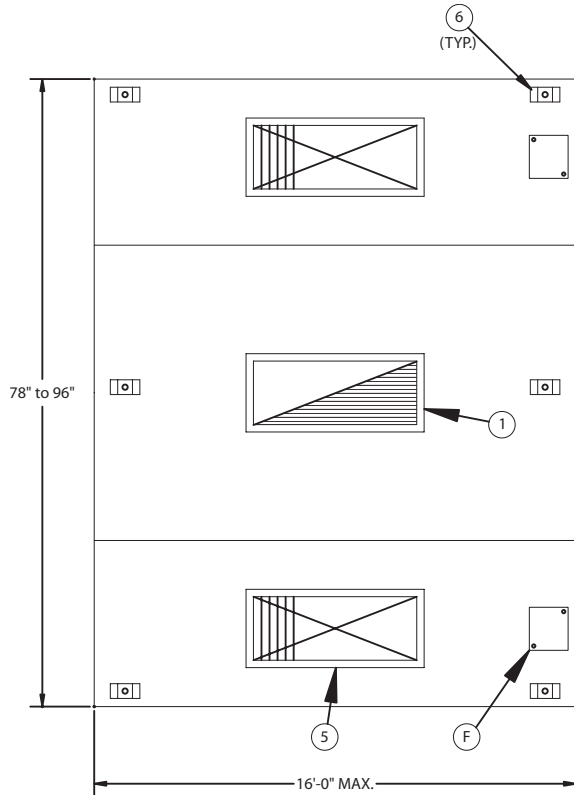
A clearance of 3" (76 mm) is required when the hood is in contact with semi-combustible materials. As per NFPA-96 standards, a stainless steel spacer will be required.

Electrical:

Junction box and pre-wiring for lighting system may be factory installed if required.

C

Filter hood with frontal make-up air



Optional accessories: (see section "K" for details)

A	listed exhaust collar with fire damper
B	listed exhaust collar with balancing damper
D	Wire guard for incandescent lights
E	36" or 48" fluorescent lights (Quantity recommended: (1) light per 8 linear feet of hood)
F	Junction box and pre-wiring for lighting
H	Enclosure panels, stainless steel with #4 finish, between hood and ceiling
I	PAC-02 programmable control panel
J	End skirts should be used to maximize hood performance
L	listed stainless steel baffle filters
O	ETL-listed end of day damper

Accessories included:

1	Exhaust collar (3" high)
2	Grease receptacle
3	listed galvanized steel baffle filters
5	Supply collar with listed fire damper
6	Hanging brackets
7	Stainless steel supply grid
C	Incandescent lights (Quantity recommended: (1) light per 5 linear feet of hood)

C Filter hood with frontal make-up air

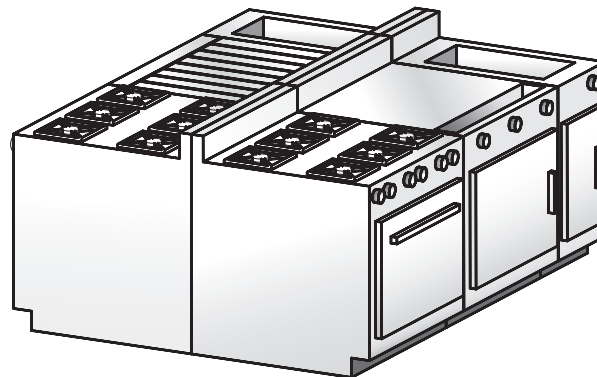
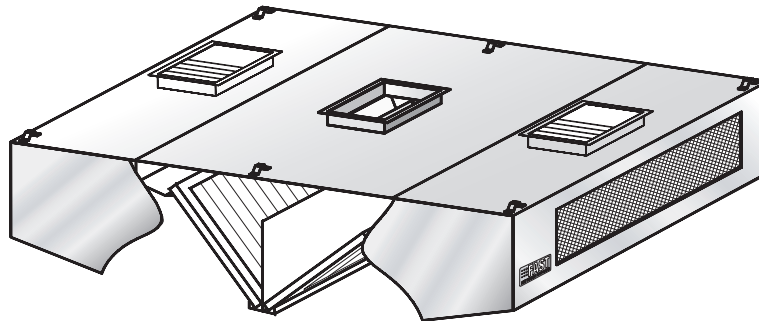
Length		520 CFM (245 L / S) / Linear Ft. *				Supply		Collar/Opening 12" (305 mm) x _____	
Feet	mm	CFM	L/S	Inches	mm	CFM	L/S	Inches	mm
3'-6"	1068	1820	860	14	356	1400	660	(2) 12	(2) 305
4'-0"	1220	2080	982	14	356	1650	780	(2) 12	(2) 305
4'-6"	1372	2340	1105	16	406	1800	850	(2) 14	(2) 356
5'-0"	1524	2600	1227	18	457	2050	970	(2) 14	(2) 356
5'-6"	1676	2860	1350	20	508	2250	1060	(2) 16	(2) 406
6'-0"	1828	3120	1473	22	559	2480	1170	(2) 18	(2) 457
6'-6"	1981	3380	1595	24	610	2720	1285	(2) 20	(2) 508
7'-0"	2134	3640	1718	26	660	2950	1390	(2) 22	(2) 559
7'-6"	2286	3900	1840	28	711	3150	1485	(2) 22	(2) 559
8'-0"	2438	4160	1964	30	762	3250	1535	(2) 24	(2) 610
8'-6"	2590	4420	2086	32	812	3500	1650	(2) 26	(2) 660
9'-0"	2743	4680	2208	34	864	3800	1795	(2) 28	(2) 711
9'-6"	2895	4940	2332	(2) 18	(2) 457	4050	1910	(2) 28	(2) 711
10'-0"	3048	5200	2455	(2) 18	(2) 457	4300	2030	(4) 16	(4) 406
10'-6"	3200	5460	2577	(2) 20	(2) 508	4550	2150	(4) 16	(4) 406
11'-0"	3352	5720	2700	(2) 20	(2) 508	4800	2265	(4) 18	(4) 457
11'-6"	3505	5980	2823	(2) 22	(2) 559	5100	2410	(4) 18	(4) 457
12'-0"	3657	6240	2945	(2) 22	(2) 559	5300	2500	(4) 18	(4) 457
12'-6"	3810	6500	3068	(2) 24	(2) 610	5500	2595	(4) 20	(4) 508
13'-0"	3962	6760	3190	(2) 24	(2) 610	5750	2715	(4) 20	(4) 508
13'-6"	4115	7020	3314	(2) 26	(2) 660	6000	2830	(4) 22	(4) 559
14'-0"	4267	7280	3435	(2) 26	(2) 660	6300	2975	(4) 22	(4) 559
14'-6"	4420	7540	3560	(2) 28	(2) 711	6550	3090	(4) 24	(4) 610
15'-0"	4572	7800	3680	(2) 28	(2) 711	6800	3210	(4) 24	(4) 610
15'-6"	4724	8060	3804	(2) 30	(2) 762	7000	3300	(4) 26	(4) 660
16'-0"	4877	8320	3926	(2) 30	(2) 762	7200	3400	(4) 26	(4) 660

* Exhaust for 84" (2,130 mm) V-bank filter central island hood.




	Exhaust VOLUME (CFM / Lin. Ft.)	Internal pressure loss (IN / H ₂ O)	Exhaust VOLUME (L/S per linear metre)	Internal pressure loss (Pa)
Light cooking	450	0,40	696	100
Medium cooking	520	0,40	800	100
Heavy cooking	700	0,60	1080	150



Model **LP-SSH-C-MUA-F****C****Filter hood with frontal make-up air****Description:**

FAST central island exhaust hood model LP-SSH-C-MUA-F complete with baffle filters. Ideal for kitchens with limited ceiling space and avoid extensive duct work to multiple ceiling diffusers. For low-ceiling kitchen.

Specifications:

- Constructed of sturdy 18-gauge (1.2 mm) stainless steel
- Available in lengths of 3' 0" to 16' 0" (914 mm to 4,877 mm)
- Specially designed for low-ceiling kitchens
- Washable baffle filters
- Replacement tempered air distributed at front of hood
- Improves productivity by ensuring efficiency, performance and comfort for the kitchen staff
- Easy installation
- Listed NSF, ETL and 
- Many options available (see reverse)
- Quick delivery

Enclosure panels (optional):

The space between the top of the hood and the ceiling may be closed with stainless steel panels in the same finish as the hood.

Construction:

Exposed hood surface: type 430 stainless steel (304 optional) with #4 finish (brushed). Non-exposed hood surface: stainless steel with #2B finish. Minimum 18-gauge (1.2 mm) thickness. All visible welded joints are polished to match original finish. To meet NFPA- 96 requirements.

Installation:Suspension (recommended height)

The hood should be installed 6' 6" (1,981 mm) from the floor. Hanging brackets are welded at all four corners.

Semi-combustible materials

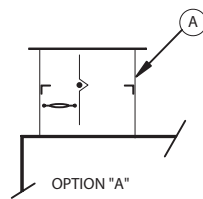
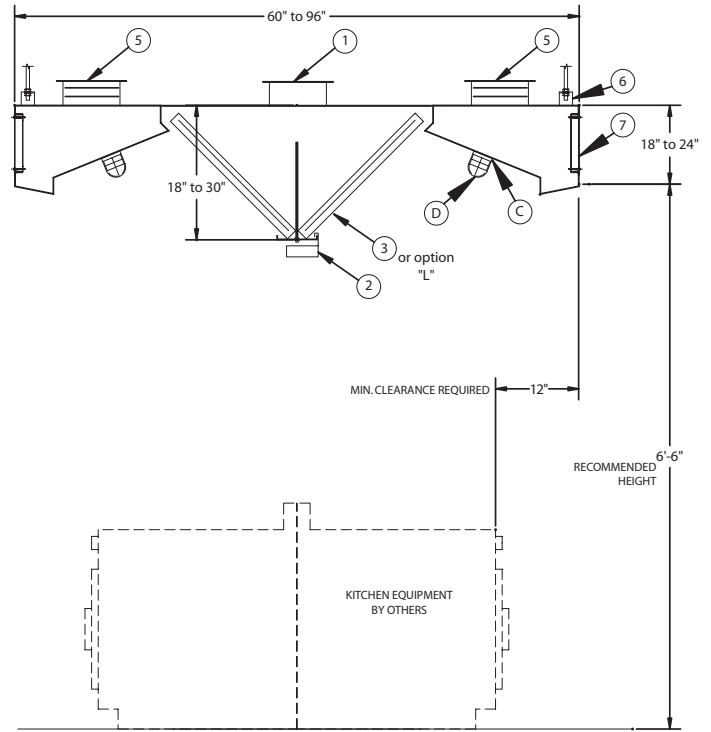
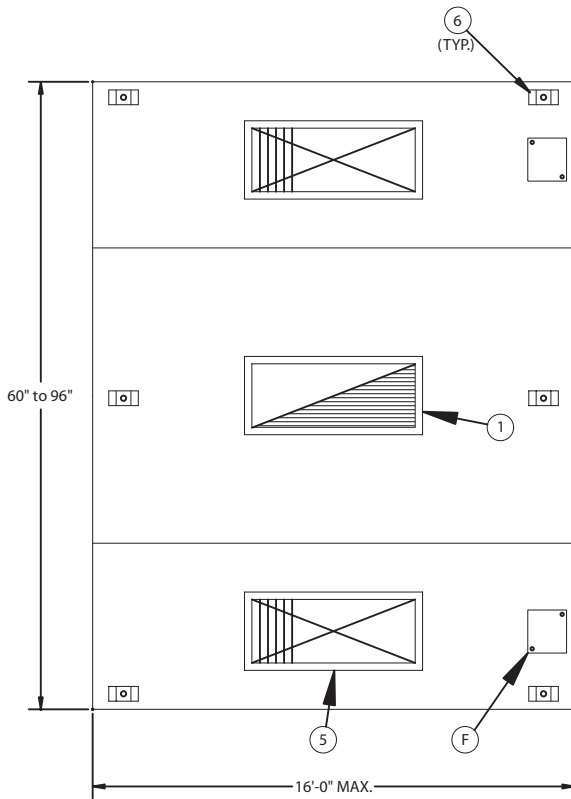
A clearance of 3" (76 mm) is required when the hood is in contact with semi-combustible materials. As per NFPA-96 standards, a stainless steel spacer will be required.

Electrical:

Junction box and pre-wiring for lighting system may be factory installed if required.

C

Filter hood with frontal make-up air



Optional accessories: (see section "K" for details)

A	UL listed exhaust collar with fire damper
B	UL listed exhaust collar with balancing damper
D	Wire guard for incandescent lights
F	Junction box and pre-wiring for lighting
H	Enclosure panels, stainless steel with #4 finish, between hood and ceiling
I	PAC-02 programmable control panel
J	End skirts should be used to maximize hood performance
L	UL listed stainless steel baffle filters
O	ETL-listed end of day damper

Accessories included:

1	Exhaust collar (3" high)
2	Grease receptacle
3	UL listed galvanized steel baffle filters
5	Supply collar with UL listed fire damper
6	Hanging brackets
7	Stainless steel supply grid
C	Incandescent lights (Quantity recommended: (1) light per 5 linear feet of hood)

C Filter hood with frontal make-up air

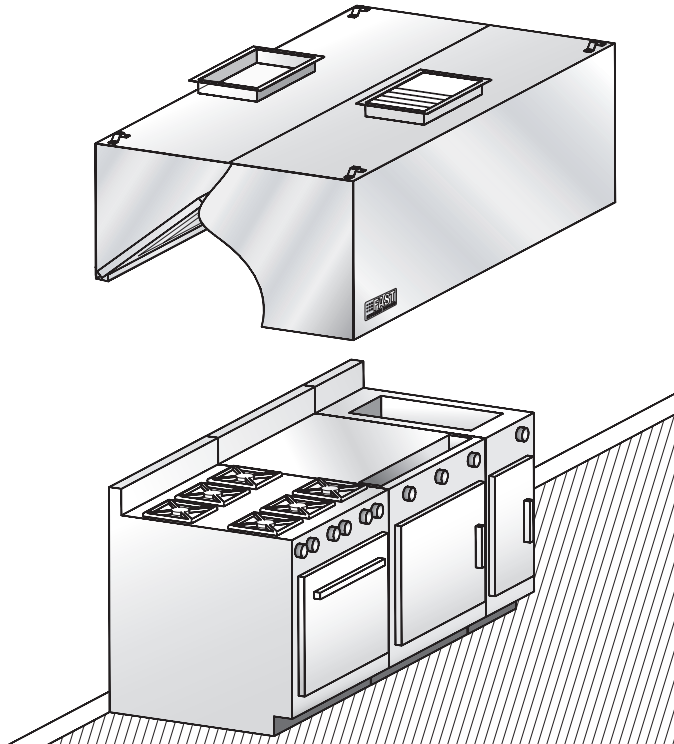
Length		520 CFM (245 L / S) / Linear Ft. *				Supply		Collar/Opening 12" (305 mm) x _____	
Feet	mm	CFM	L/S	Inches	mm	CFM	L/S	Inches	mm
3'-6"	1068	1820	860	14	356	1400	660	(2) 12	(2) 305
4'-0"	1220	2080	982	14	356	1650	780	(2) 12	(2) 305
4'-6"	1372	2340	1105	16	406	1800	850	(2) 14	(2) 356
5'-0"	1524	2600	1227	18	457	2050	970	(2) 14	(2) 356
5'-6"	1676	2860	1350	20	508	2250	1060	(2) 16	(2) 406
6'-0"	1828	3120	1473	22	559	2480	1170	(2) 18	(2) 457
6'-6"	1981	3380	1595	24	610	2720	1285	(2) 20	(2) 508
7'-0"	2134	3640	1718	26	660	2950	1390	(2) 22	(2) 559
7'-6"	2286	3900	1840	28	711	3150	1485	(2) 22	(2) 559
8'-0"	2438	4160	1964	30	762	3250	1535	(2) 24	(2) 610
8'-6"	2590	4420	2086	32	812	3500	1650	(2) 26	(2) 660
9'-0"	2743	4680	2208	34	864	3800	1795	(2) 28	(2) 711
9'-6"	2895	4940	2332	(2) 18	(2) 457	4050	1910	(2) 28	(2) 711
10'-0"	3048	5200	2455	(2) 18	(2) 457	4300	2030	(4) 16	(4) 406
10'-6"	3200	5460	2577	(2) 20	(2) 508	4550	2150	(4) 16	(4) 406
11'-0"	3352	5720	2700	(2) 20	(2) 508	4800	2265	(4) 18	(4) 457
11'-6"	3505	5980	2823	(2) 22	(2) 559	5100	2410	(4) 18	(4) 457
12'-0"	3657	6240	2945	(2) 22	(2) 559	5300	2500	(4) 18	(4) 457
12'-6"	3810	6500	3068	(2) 24	(2) 610	5500	2595	(4) 20	(4) 508
13'-0"	3962	6760	3190	(2) 24	(2) 610	5750	2715	(4) 20	(4) 508
13'-6"	4115	7020	3314	(2) 26	(2) 660	6000	2830	(4) 22	(4) 559
14'-0"	4267	7280	3435	(2) 26	(2) 660	6300	2975	(4) 22	(4) 559
14'-6"	4420	7540	3560	(2) 28	(2) 711	6550	3090	(4) 24	(4) 610
15'-0"	4572	7800	3680	(2) 28	(2) 711	6800	3210	(4) 24	(4) 610
15'-6"	4724	8060	3804	(2) 30	(2) 762	7000	3300	(4) 26	(4) 660
						7200	3400	(4) 26	(4) 660

* Exhaust for 84" (2,130 mm) V-bank filter central island hood.




	Exhaust VOLUME (CFM / Lin. Ft.)	Internal pressure loss (IN / H ₂ O)	Exhaust VOLUME (L/S per linear metre)	Internal pressure loss (Pa)
Light cooking	450	0,40	696	100
Medium cooking	520	0,40	800	100
Heavy cooking	700	0,60	1080	150



Model **SSH-MUA****C****Filter hood with internal make-up air****Description:**

FAST wall-type exhaust hood model SSH-MUA complete with baffle filters.

Specifications:

- Constructed of sturdy 18-gauge (1.2 mm) stainless steel
- Available in lengths of 3' 0" to 16' 0" (914 mm to 4,877 mm)
- Washable baffle filters.
- Untempered air introduced directly into hood
- Easy installation
- Listed NSF, ETL and 
- Many options available (see reverse)
- Quick delivery

Enclosure panels (optional):

The space between the top of the hood and the ceiling may be closed with stainless steel panels in the same finish as the hood.

Construction:

Exposed hood surface: type 430 stainless steel (304 optional) with #4 finish (brushed). Non-exposed hood surface: stainless steel with #2B finish. Minimum 18-gauge (1.2 mm) thickness. All visible welded joints are polished to match original finish. To meet NFPA- 96 requirements.

Installation:Suspension (recommended height)

The hood should be installed 6' 6" (1,981 mm) from the floor. Hanging brackets are welded at all four corners.

Semi-combustible materials

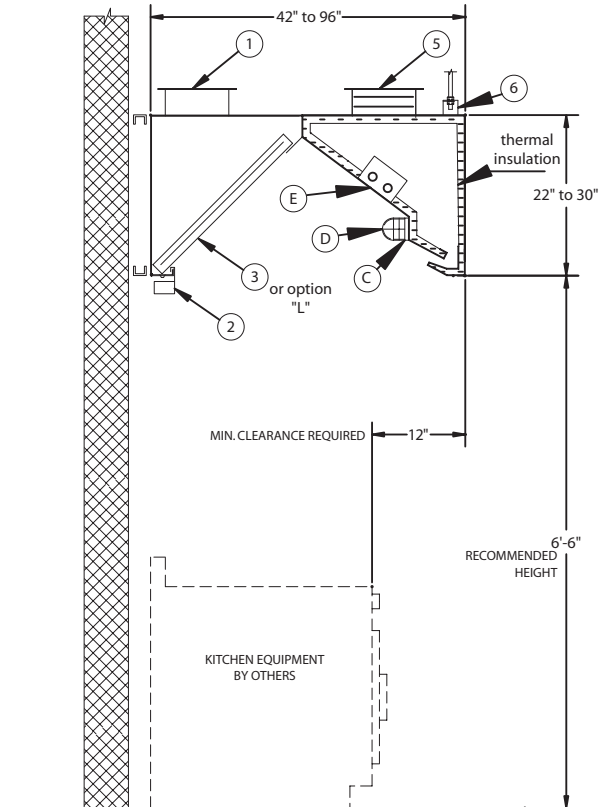
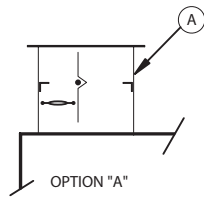
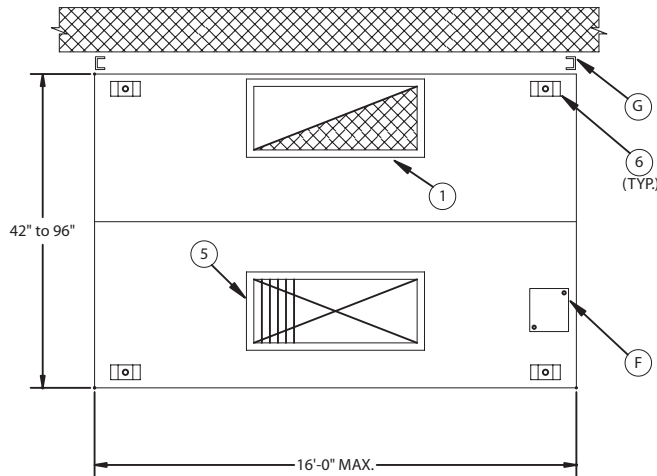
A clearance of 3" (76 mm) is required when the hood is in contact with semi-combustible materials. As per NFPA-96 standards, a stainless steel spacer will be required.

Electrical:

Junction box and pre-wiring for lighting system may be factory installed if required.

C

Filter hood with internal make-up air



Optional accessories: (see section "K" for details)

A	listed exhaust collar with fire damper
B	listed exhaust collar with balancing damper
D	Wire guard for incandescent lights
E	36" or 48" fluorescent lights (Quantity recommended: (1) light per 8 linear feet of hood)
F	Junction box and pre-wiring for lighting
H	Enclosure panels, stainless steel with #4 finish, between hood and ceiling
I	PAC-02 programmable control panel
J	End skirts should be used to maximize hood performance
L	listed stainless steel baffle filters
M	DDSP (Down Discharge Supply Plenum)
N	FDSP (Front Discharge Supply Plenum)
O	ETL-listed end of day damper

Accessories included:

1	Exhaust collar (3" high)
2	Grease receptacle
3	listed galvanized steel baffle filters
5	Supply collar with listed fire damper
6	Hanging brackets
C	Incandescent lights (Quantity recommended: (1) light per 5 linear feet of hood)
G	3" rear-spacer for clearance to meet NFPA- 96 requirements

C Filter hood with internal make-up air

Length		260 CFM (125 L / S) / Linear Ft. *				Supply		Collar/Opening 9" (208 mm) x _____	
Feet	mm	Exhaust CFM	L/S	Collar/Opening 10" (254 mm) x _____ Inches	mm	CFM	L/S	Inches	mm
3'-6"	1068	910	430	10	254	460	220	12	305
4'-0"	1220	1040	490	12	305	525	250	14	355
4'-6"	1372	1170	550	12	305	600	280	16	405
5'-0"	1524	1300	615	14	355	650	310	18	455
5'-6"	1676	1430	675	16	405	725	340	20	510
6'-0"	1828	1560	735	16	405	800	380	22	560
6'-6"	1981	1690	800	18	457	850	400	24	610
7'-0"	2134	1820	860	20	508	925	440	26	660
7'-6"	2286	1950	920	22	558	1000	470	28	710
8'-0"	2438	2080	980	24	610	1050	495	30	760
8'-6"	2590	2210	1045	24	610	1100	520	(2) 16	(2) 405
9'-0"	2743	2340	1105	26	660	1175	555	(2) 16	(2) 405
9'-6"	2895	2470	1165	28	711	1250	590	(2) 18	(2) 455
10'-0"	3048	2600	1230	28	711	1300	615	(2) 18	(2) 455
10'-6"	3200	2730	1290	30	762	1375	650	(2) 20	(2) 510
11'-0"	3352	2860	1350	32	812	1450	685	(2) 20	(2) 510
11'-6"	3505	2960	1410	(2) 16	(2) 405	1500	710	(2) 22	(2) 560
12'-0"	3657	3120	1470	(2) 18	(2) 457	1575	745	(2) 22	(2) 560
12'-6"	3810	3250	1535	(2) 18	(2) 457	1650	780	(2) 24	(2) 610
13'-0"	3962	3380	1595	(2) 18	(2) 457	1700	800	(2) 24	(2) 610
13'-6"	4115	3510	1635	(2) 20	(2) 508	1775	840	(2) 26	(2) 660
14'-0"	4267	3640	1720	(2) 20	(2) 508	1850	875	(2) 26	(2) 660
14'-6"	4420	3770	1780	(2) 20	(2) 508	1900	900	(2) 28	(2) 710
15'-0"	4572	3900	1840	(2) 22	(2) 558	1975	930	(2) 28	(2) 710
15'-6"	4724	4030	1900	(2) 22	(2) 558	2050	970	(2) 30	(2) 760
16'-0"	4877	4160	1965	(2) 24	(2) 610	2100	990	(2) 30	(2) 760

* Exhaust for 42" (1,065 mm) and 48" (1,220 mm)-deep hoods.

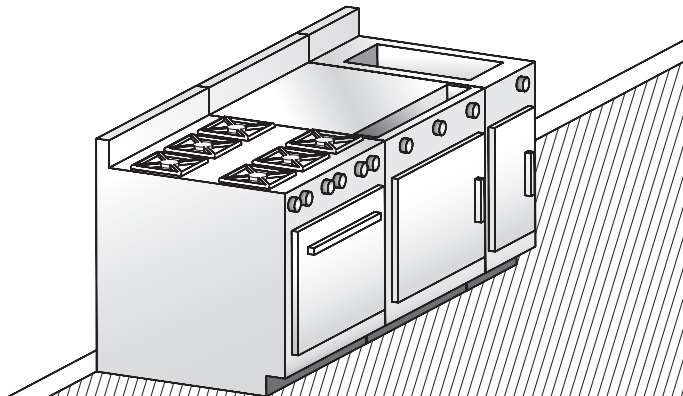
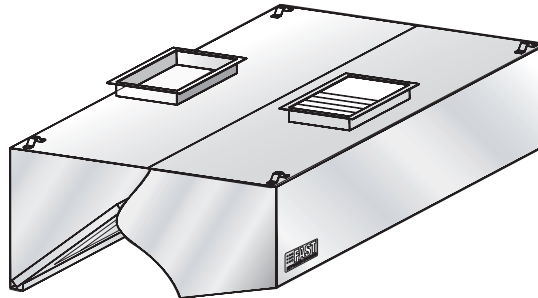
Note:

It is always preferable to plan auxiliary heated air input for any difference of air greater than 900 CFM. Contact us for assistance to determine the appropriate air volume.




	Exhaust VOLUME (CFM / Lin. Ft.)	Internal pressure loss (IN / H ₂ O)	Exhaust VOLUME (L/S per linear metre)	Internal pressure loss (Pa)
Medium cooking	260	0,40	400	100



Model **LP-SSH-MUA****C****Filter hood with internal make-up air****Description:**

FAST wall-type exhaust hood model LP-SSH-MUA complete with baffle filters. Specially designed for low-ceiling kitchens.

Specifications:

- Constructed of sturdy 18-gauge (1.2 mm) stainless steel
- Available in lengths of 3' 0" to 16' 0" (914 mm to 4,877 mm)
- Washable baffle filters
- Unheated air introduced directly into hood
- Easy installation
- Specially designed for low-ceiling kitchens
- Listed NSF, ETL and 
- Many options available (see reverse)
- Quick delivery

Enclosure panels (optional):

The space between the top of the hood and the ceiling may be closed with stainless steel panels in the same finish as the hood.

Construction:

Exposed hood surface: type 430 stainless steel (304 optional) with #4 finish (brushed). Non-exposed hood surface: stainless steel with #2B finish. Minimum 18-gauge (1.2 mm) thickness. All visible welded joints are polished to match original finish. To meet NFPA-96 requirements.

Installation:Suspension (recommended height)

The hood should be installed 6' 6" (1,981 mm) from the floor. Hanging brackets are welded at all four corners.

Semi-combustible materials

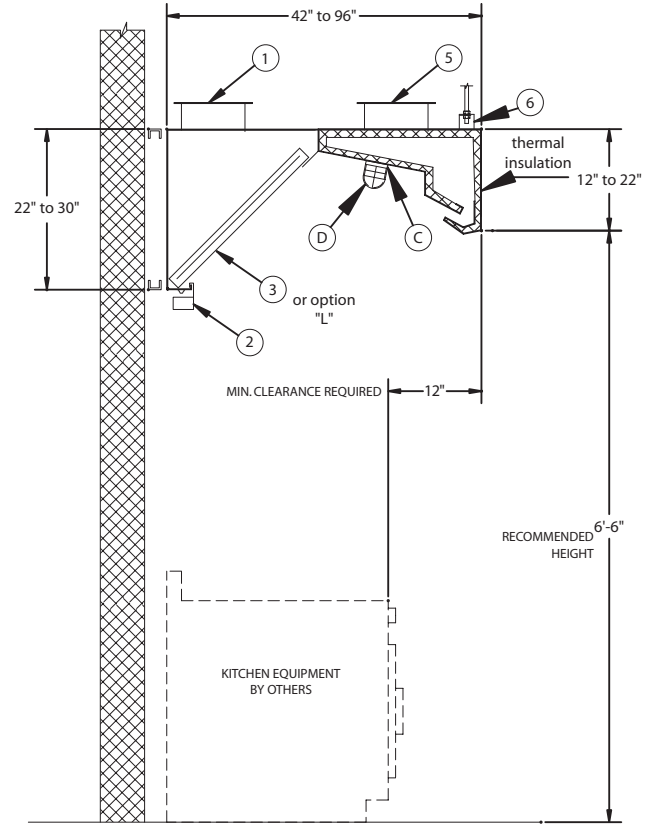
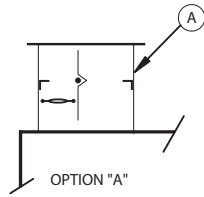
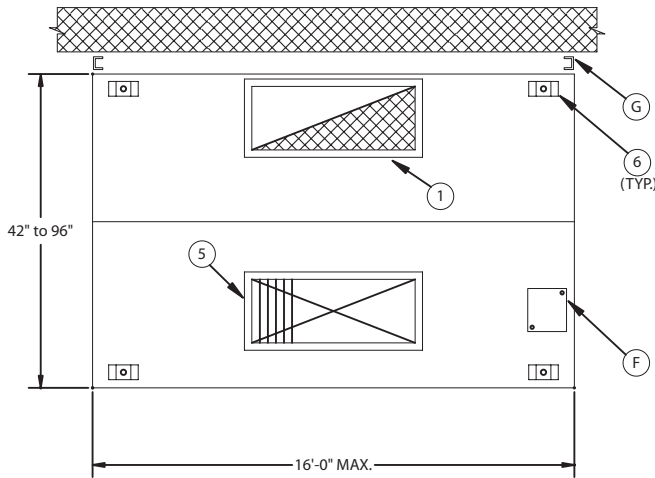
A clearance of 3" (76 mm) is required when the hood is in contact with semi-combustible materials. As per NFPA-96 standards, a stainless steel spacer will be required.

Electrical:

Junction box and pre-wiring for lighting system may be factory installed if required.

C

Filter hood with internal make-up air



Optional accessories: (see section "K" for details)

A	listed exhaust collar with fire damper
B	listed exhaust collar with balancing damper
D	Wire guard for incandescent lights
F	Junction box and pre-wiring for lighting
H	Enclosure panels, stainless steel with #4 finish, between hood and ceiling
I	PAC-02 programmable control panel
J	End skirts should be used to maximize hood performance
L	listed stainless steel baffle filters
M	DDSP (Down Discharge Supply Plenum)
N	FDSP (Front Discharge Supply Plenum)
O	ETL-listed end of day damper

Accessories included:

1	Exhaust collar (3" high)
2	Grease receptacle
3	listed galvanized steel baffle filters
5	Supply collar with listed fire damper
6	Hanging brackets
C	Incandescent lights (Quantity recommended: (1) light per 5 linear feet of hood)
G	3" rear-spacer for clearance to meet NFPA- 96 requirements

C Filter hood with internal make-up air

Length		260 CFM (125 L / S) / Linear Ft. *				Supply		Collar/Opening 9" (208 mm) x _____	
Feet	mm	Exhaust		Collar/Opening 10" (254 mm) x _____		CFM	L/S	Inches	mm
		CFM	L/S	Inches	mm				
3'-6"	1068	910	430	10	254	320	150	12	305
4'-0"	1220	1040	490	12	305	370	175	14	355
4'-6"	1372	1170	550	12	305	420	200	16	405
5'-0"	1524	1300	615	14	355	455	215	18	455
5'-6"	1676	1430	675	16	405	510	240	20	510
6'-0"	1828	1560	735	16	405	550	260	22	560
6'-6"	1981	1690	800	18	457	600	285	24	610
7'-0"	2134	1820	860	20	508	650	305	26	660
7'-6"	2286	1950	920	22	558	690	325	28	710
8'-0"	2438	2080	980	24	610	735	345	30	760
8'-6"	2590	2210	1045	24	610	780	370	(2) 16	(2) 405
9'-0"	2743	2340	1105	26	660	820	385	(2) 16	(2) 405
9'-6"	2895	2470	1165	28	711	875	410	(2) 18	(2) 455
10'-0"	3048	2600	1230	28	711	920	435	(2) 18	(2) 455
10'-6"	3200	2730	1290	30	762	960	450	(2) 20	(2) 510
11'-0"	3352	2860	1350	32	812	1015	480	(2) 20	(2) 510
11'-6"	3505	2960	1410	(2) 16	(2) 405	1060	500	(2) 22	(2) 560
12'-0"	3657	3120	1470	(2) 18	(2) 457	1100	520	(2) 22	(2) 560
12'-6"	3810	3250	1535	(2) 18	(2) 457	1150	540	(2) 24	(2) 610
13'-0"	3962	3380	1595	(2) 18	(2) 457	1190	560	(2) 24	(2) 610
13'-6"	4115	3510	1635	(2) 20	(2) 508	1250	590	(2) 26	(2) 660
14'-0"	4267	3640	1720	(2) 20	(2) 508	1295	610	(2) 26	(2) 660
14'-6"	4420	3770	1780	(2) 20	(2) 508	1340	630	(2) 28	(2) 710
15'-0"	4572	3900	1840	(2) 22	(2) 558	1380	650	(2) 28	(2) 710
15'-6"	4724	4030	1900	(2) 22	(2) 558	1420	670	(2) 30	(2) 760
16'-0"	4877	4160	1965	(2) 24	(2) 610	1470	695	(2) 30	(2) 760

* Exhaust for 42" (1,065 mm) and 48" (1,220 mm)-deep hoods.

Note:

It is always preferable to plan auxiliary heated air input for any difference of air greater than 900 CFM. Contact us for assistance to determine the appropriate air volume.



	Exhaust VOLUME (CFM / Lin. Ft.)	Internal pressure loss (IN / H ₂ O)	Exhaust VOLUME (L/S per linear metre)	Internal pressure loss (Pa)
Medium cooking	260	0,40	122	100

